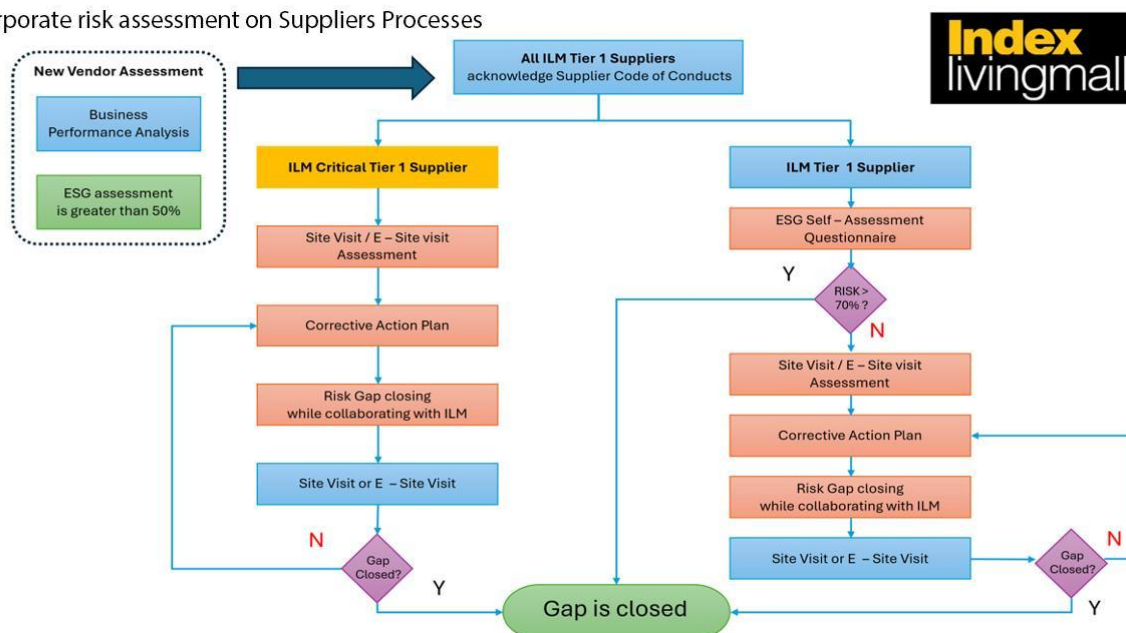


1. Supplier Risk Assessment Process

Corporate risk assessment on Suppliers Processes

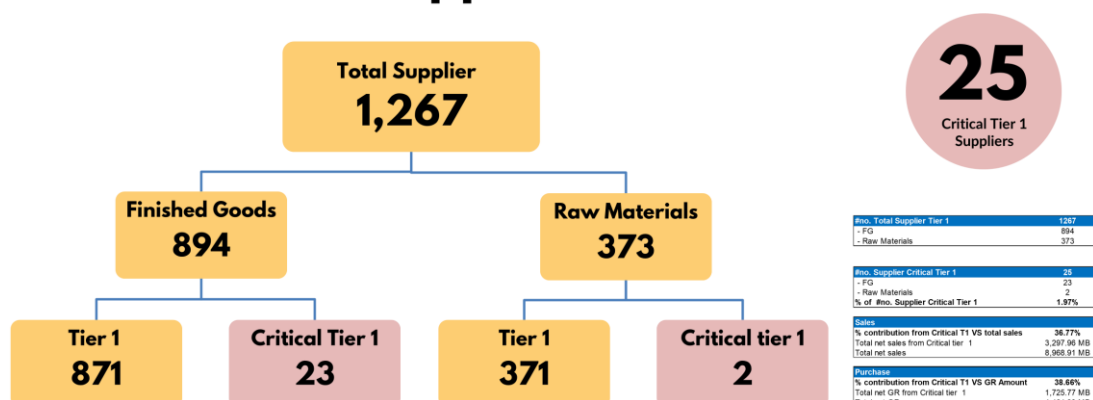


2. Sustainable Supply Chain Management Performance for Fiscal Year 2024–2025

2.1 Identification of Key Suppliers (FY 2024–2025)

Details	Number of Suppliers	%
Total number of Suppliers	1,267	
Number of Critical Tier 1 Suppliers	25	1.97%
Number of Critical Non-Tier 1 Suppliers	-	0%

Summary of Critical Tier 1 Suppliers



The company has a total of **1,267 suppliers**, consisting of **894 finished goods suppliers** and **373 raw material suppliers**. Among them, **25 suppliers (1.97%)** are classified as **Critical Tier 1 Suppliers**.

The company's **Spending Analysis** covers only "**raw material manufacturers**" and "**service providers directly related to product manufacturing**", which are considered **Strategic Products** of the business. It **excludes** consumable material producers (e.g., office equipment) and general service providers with negligible transaction values. This scope is aligned with the company's policy to focus the analysis on supplier groups that have a **direct impact on the business**.

2.2 Supplier Risk Assessment through Self-Assessment Questionnaire (SAQ)

Risk Category	Number of Suppliers	Action Plan
Business Risk	None identified	-
Sustainability Risk	None identified	-

In 2024, the company conducted an **economic risk assessment** of its **25 critical suppliers**.

No economic risks were identified, and all suppliers fully complied with the company's established **ESG (Environmental, Social, and Governance)** framework.

2.3) Audit and Training of Critical Tier 1 Suppliers (Existing Suppliers)

Conducted through On-site Visits and/or Remote-Site Visits on ESG Aspects

Supplier Category	Number of Suppliers Requiring Audit	Number Audited
Critical Tier 1 Suppliers	25	25 (100%)
Suppliers with Environment risk	0	0
Suppliers with Social risk	0	0
Suppliers with Governance risk	0	0

3. Summary of Corporate Governance and Supplier Management Performance

Details	Unit	2024	2025	2025 Target
ESG Self-Assessment Questionnaire Response Rate (Existing Suppliers)	%	100% (30 suppliers)	100% (25 suppliers)	100% pf Critical Tier 1 Suppliers
Suppliers Communicated and Trained in the Supplier Code of Conduct	%	100%	100%	100%
ESG Risk Assessment Rate (New Suppliers)	%	100% (60 suppliers)	100% (81 suppliers)	100%